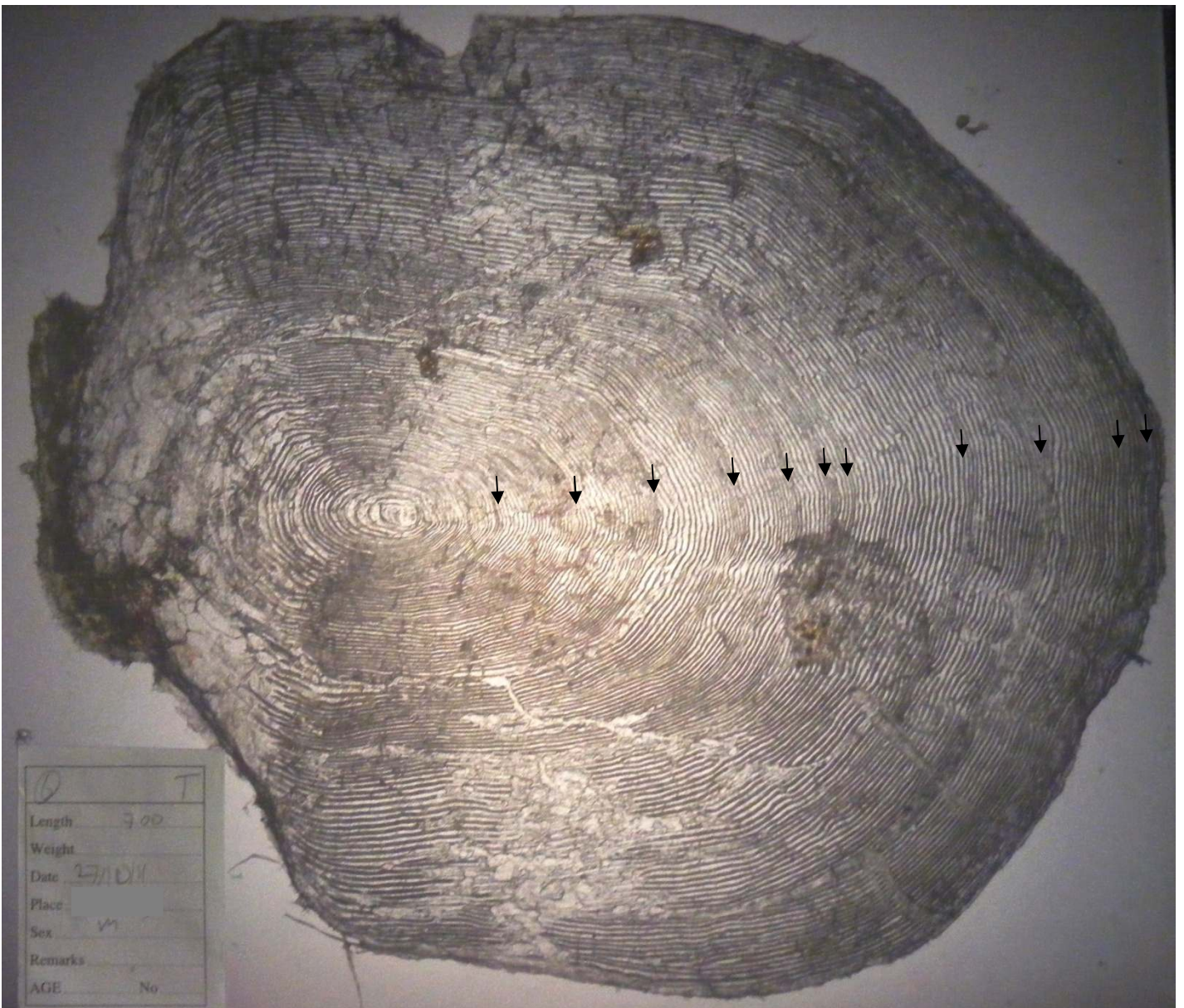


Trout, 700mm, estimated 4.5kg, spawning burn in Loch Maree catchment, 25th October 2011



This is the biggest trout seen by WRFT Biologist, Peter Cunningham, within the Loch Maree catchment in the past 10 years. The scale shows 6 or 7 years of steady growth (marked by arrows); latterly slowing then a quite dramatic increase in growth rate in 8th year, continuing in 9th and 10th year before reducing in 11th and 12th years. The fish has all the characteristics of a male *ferox*, a trout that has changed its diet from invertebrates to other fish (Arctic charr?) in its 8th year.