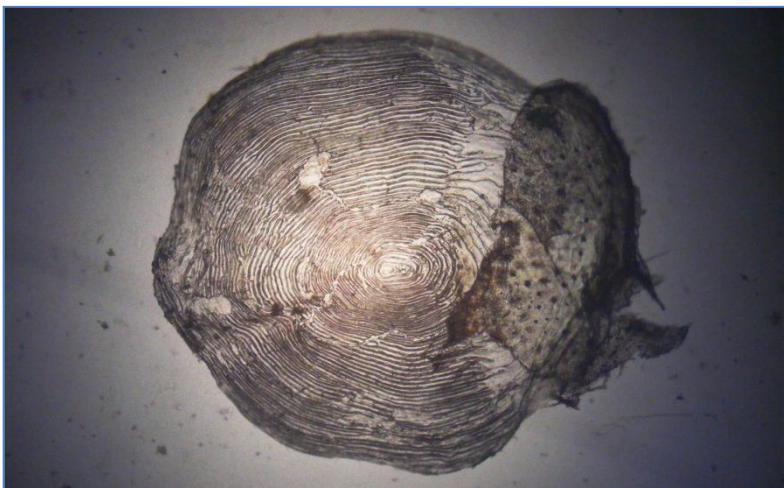


**Estuarine Brown trout (*Salmo trutta*) from sweep net sample taken at Kerry Bay over sand on 7<sup>th</sup> June 2010**

This is the largest fish so far taken as part of the on-going WRFT sea lice monitoring programme. The fish was taken in bright sunshine over sand, with a light NE wind creating on shore ripple. It was the only sea trout in the sweep; 9 smaller, more silvery sea trout were taken in the neighbouring bay a little later. The fish had 25 *Lepeophtheirus salmonis* sea lice (18 adult and preadult lice and 7 ovigerous females, no chalimus lice).



Nine scales were taken from the fish, only one of which shows growth rings to the centre (top left). This scale, is the only one from which freshwater age can be ascertained; I think two or three winters before going to sea as a smolt.

In its first summer at sea, growth is prolific; thereafter there is a growth check (spawning mark) and there are a further 4 winter growth checks (spawning marks), these are more clearly seen on the scale below and marked with arrows



This gives the trout a total age of seven or eight winters after hatching.

Sweep netting team: David Mullaney, Roger McLachlan, Garry Bulmer and Peter Cunningham.

The sweep netting programme is supported by the Scottish Government via the Tripartite Working Group