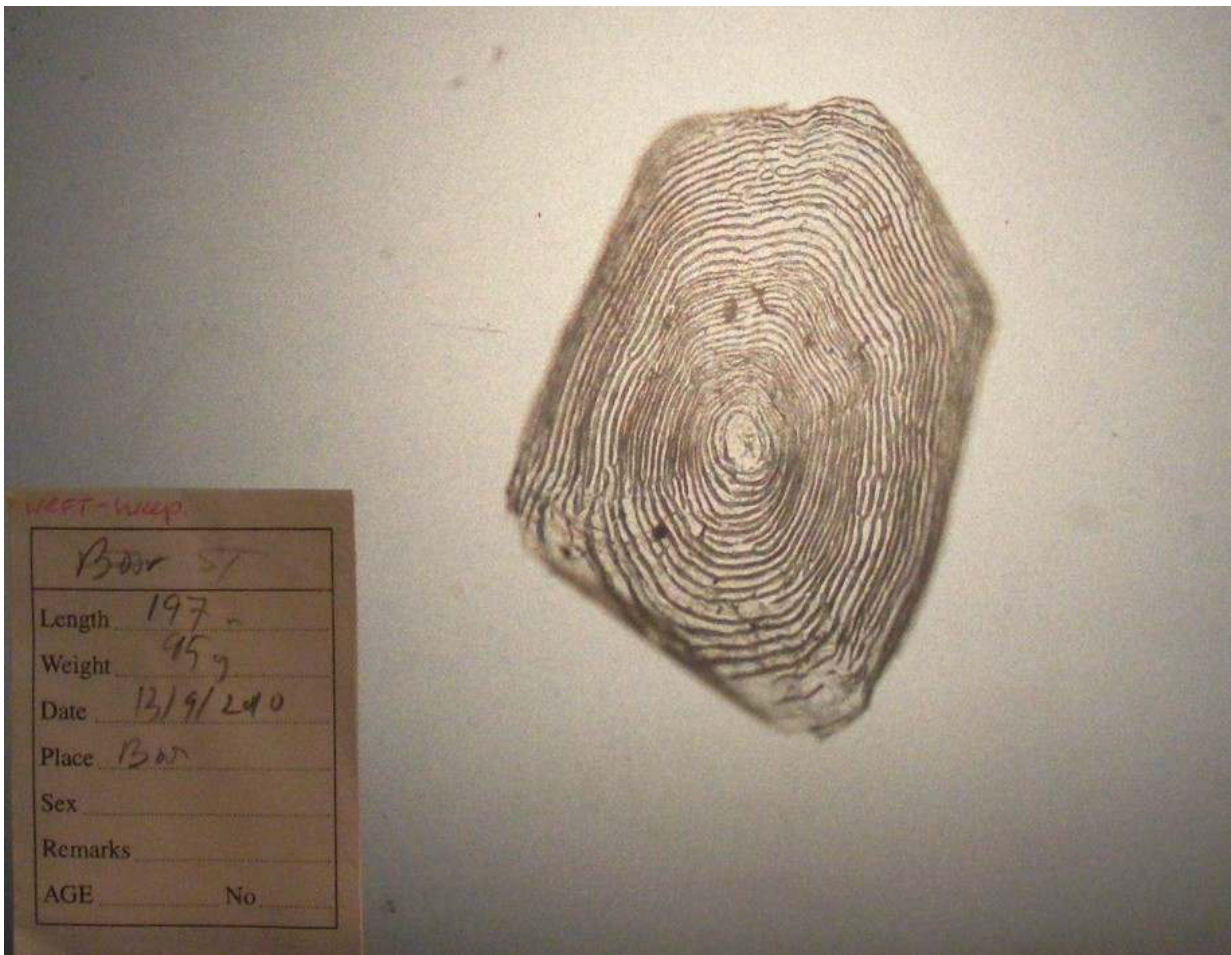


Sea trout, 197mm, and sprats taken in WRFT sweep net on 13th September 2010, Boor Bay, Loch Ewe.



This sea trout is small for early September. However, the scale suggests the fish had gone to sea as a small 2 freshwater winter smolt, growing quite quickly thereafter, slowing briefly then starting to grow fast (2 outer circuli) again (?on diet of sprats). Therefore 2.0+

There were 6 sea lice on this fish (2 chalimus, 4 preadults/adults, 0 ovigerous female), with slightly eroded dorsal fin.

Sweep netting supported by the Scottish Government via the Tripartite Working Group.