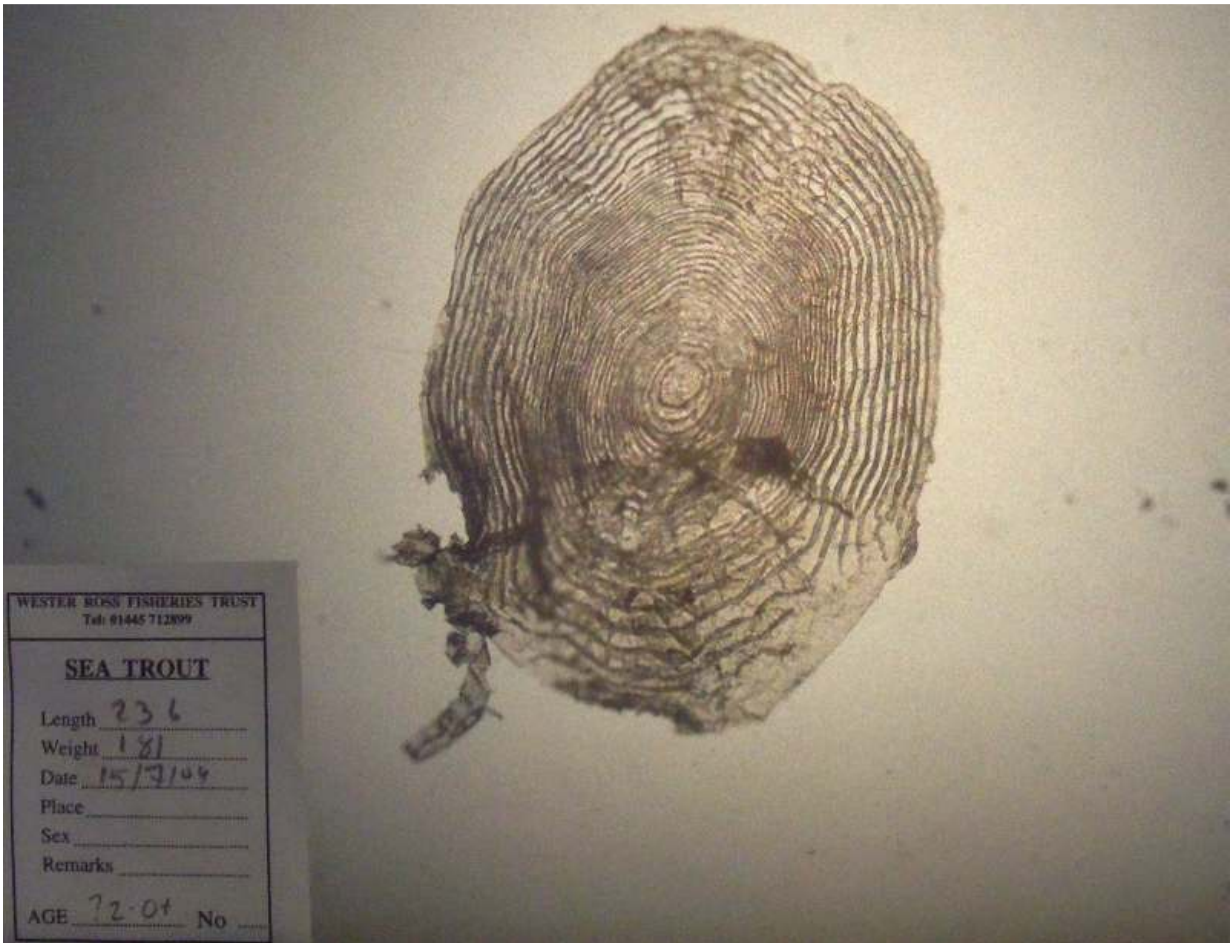


Sea trout, 236mm, 181g taken in the WRFT sweep net on 15th July 2009, at Boor Bay, Loch Ewe.



With a condition factor of 1.38 was in good condition, and the scale photo shows fast growth up to time of capture. Although circuli are not absolutely clear, the fish has been aged as a 3 year old smolt in its first summer at sea. Reading 3.0+

Six *L. salmonis* lice were recorded on this fish (3 chalimus, 3 pre-adults and adults, 0 ovigerous females). Fish photo by Ben Rushbrooke.

Sweep netting supported by the Scottish Government via the Tripartite Working Group.