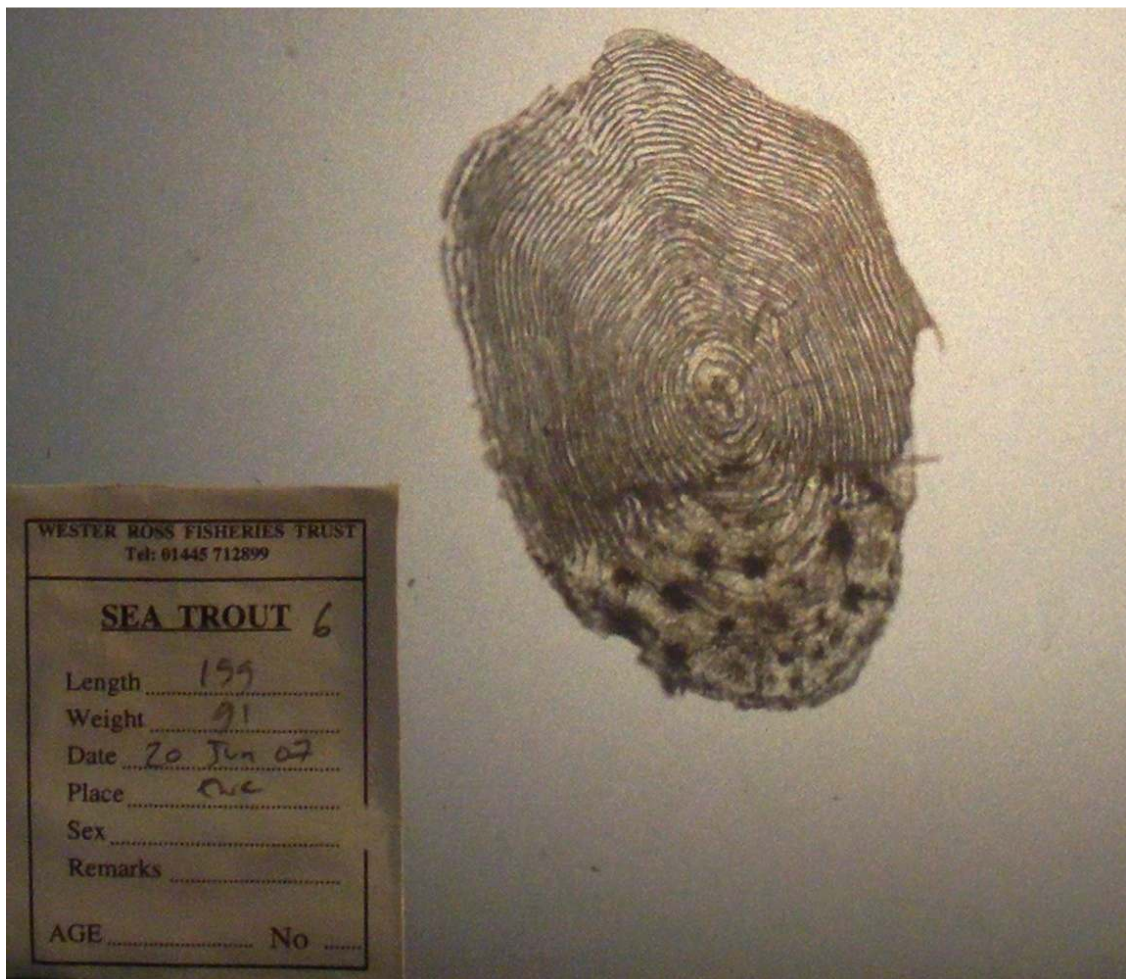


Sea trout, 199mm, taken by rod and line from the River Ewe, 20th July 2007



This fish, an early-returned post-smolt or finnock, taken in the River Ewe has been aged as a 4 year old smolt, which has been to sea briefly (two outer circuli of scale). Reading 4.0+

32 *L. salmonis* lice were counted on this fish (12 small chalimus, 18 pre-adults and adults, 2 ovigerous females). Dorsal fin was slightly damaged.

Sweep netting supported by the Scottish Government via the Tripartite Working Group.