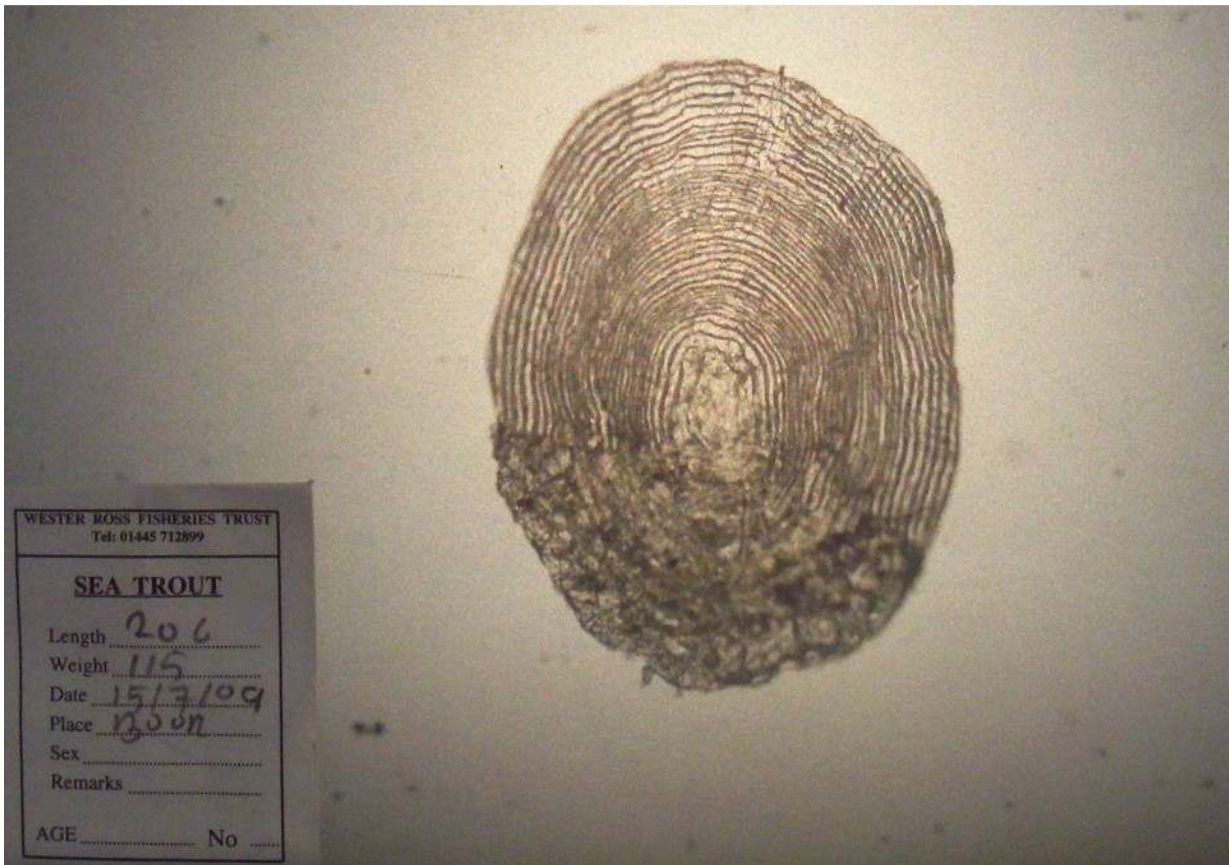


Sea trout, 206mm, 115g, taken in the WRFT sweep net on 15th July 2009, at Boor Bay, Loch Ewe.



This fish has been aged as a ?2 year old smolt (replacement centre of scale) in its first summer at sea and is growing well with a condition factor of 1.32. Reading 2.0+.

21 *L. salmonis* lice were counted on this fish (10 small chalimus, 11 pre-adults and adults, 0 ovigerous females). Fish photo by Ben Rushbrooke.

Sweep netting supported by the Scottish Government via the Tripartite Working Group.