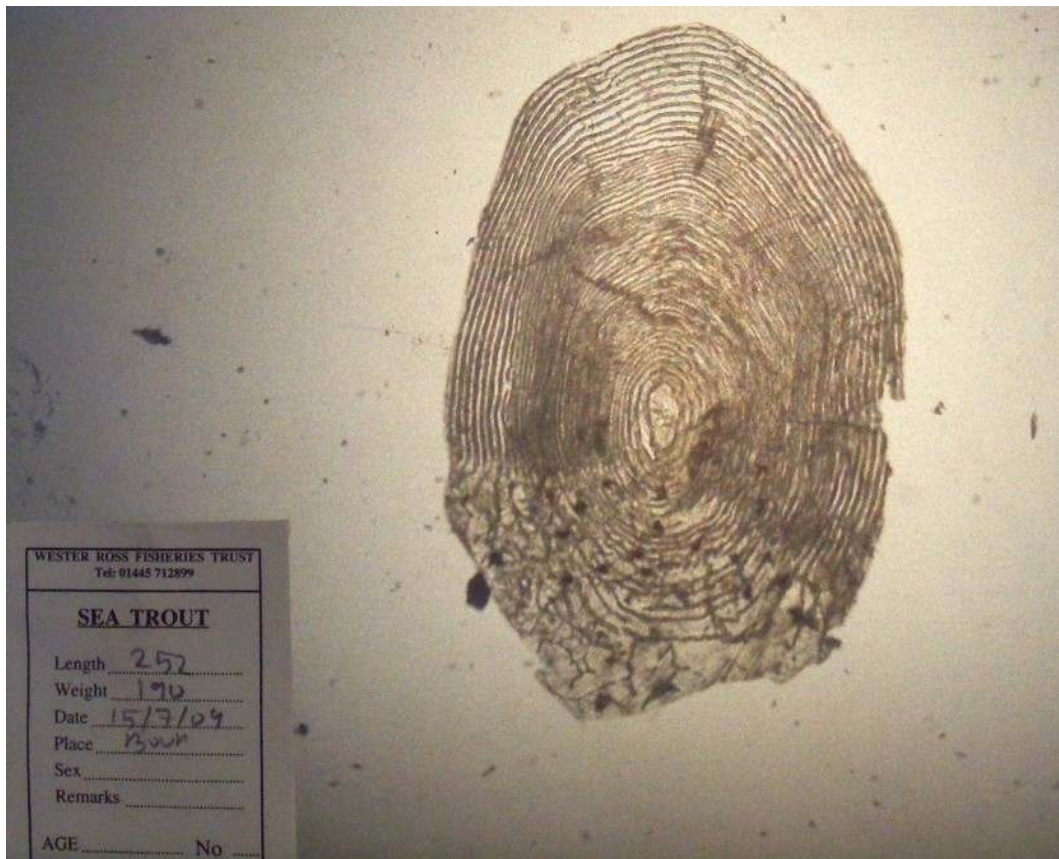
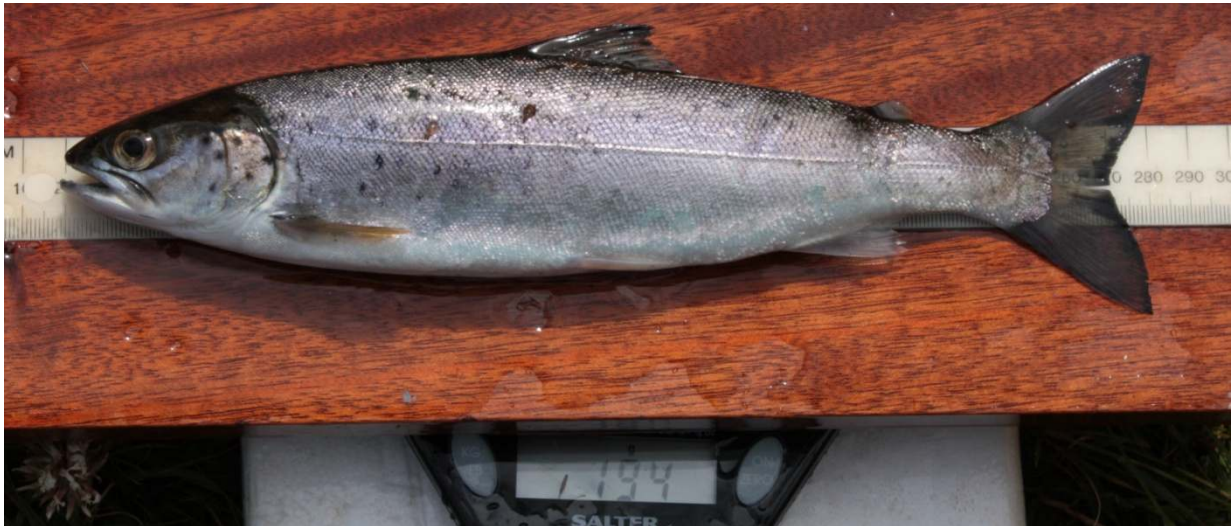


Sea trout, 252mm, 190g taken in the WRFT sweep net on 15<sup>th</sup> July 2009, at Boor Bay, Loch Ewe.



With a condition factor of 1.19, this fish was not in as good condition as some other fish in the sweep sample taken on the 15/7/09. Note the healed predator damage near tail. Nevertheless, the scale photo shows fast summer growth up to time of capture. Although circuli are not absolutely clear, the fish has been aged as a 4 year old smolt in its first summer at sea. ?4.0+

40 *L. salmonis* lice were counted on this fish (32 small chalimus [see base of dorsal fin], 8 pre-adults and adults, 0 ovigerous females). Fish photo by Ben Rushbrooke.

Sweep netting supported by the Scottish Government via the Tripartite Working Group.