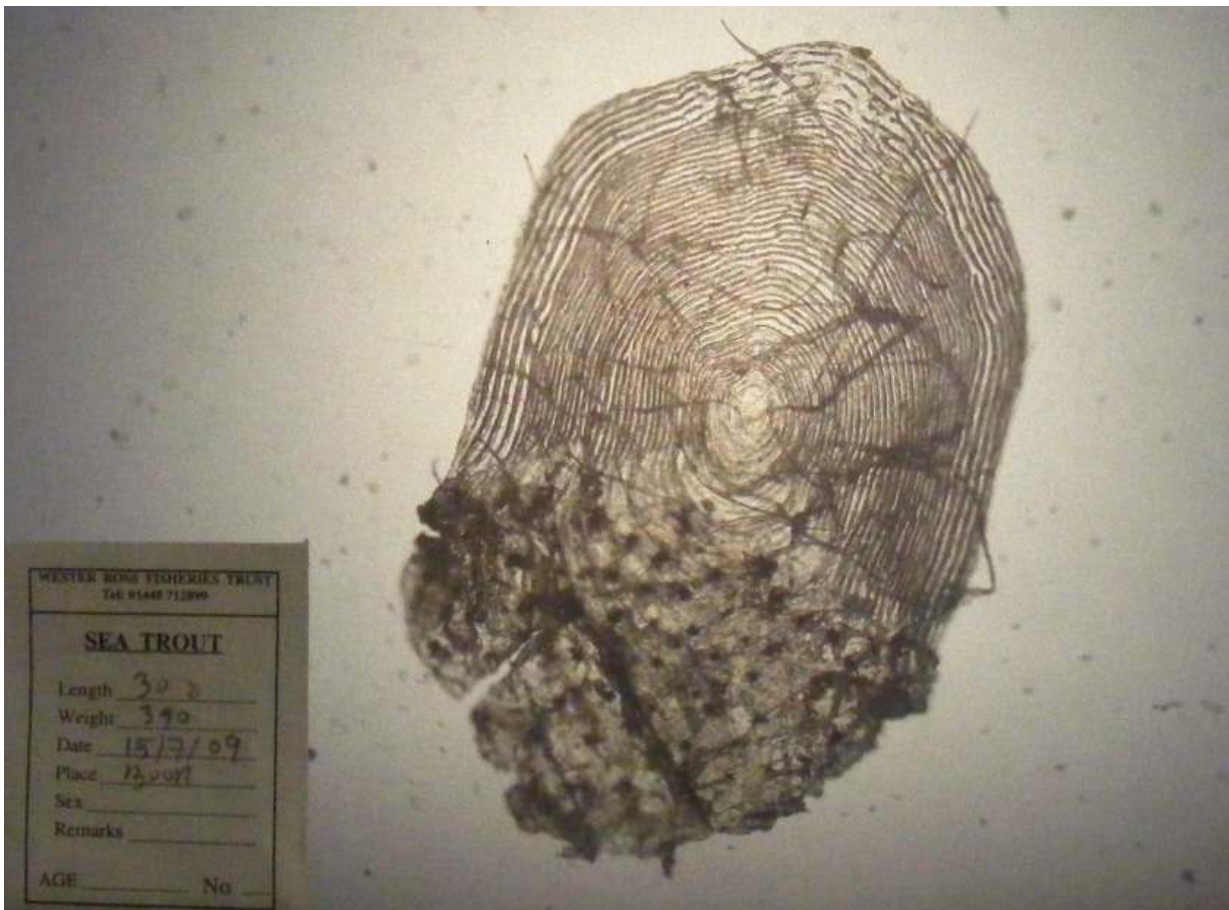


Sea trout, 308mm, 390g, taken in the WRFT sweep net on 15th July 2009, at Boor Bay, Loch Ewe.



This fish had grown quickly over preceding weeks and was in good (plump) condition [condition factor 1.33]. However, it's not clear from the scale when it sent too sea for the first time, having grown unusually fast (in freshwater) when still small, and there are no obvious winter checks between first winter in freshwater and winter prior to going to sea. I'm interpreting the fish as a very large post-smolt, 3.0+, although I'm far from confident!

4 *L. salmonis* lice were counted on this fish (0 small chalimus, 3 pre-adults and adults, 1 ovigerous females). Fish photo by Ben Rushbrooke.

Sweep netting supported by the Scottish Government via the Tripartite Working Group.