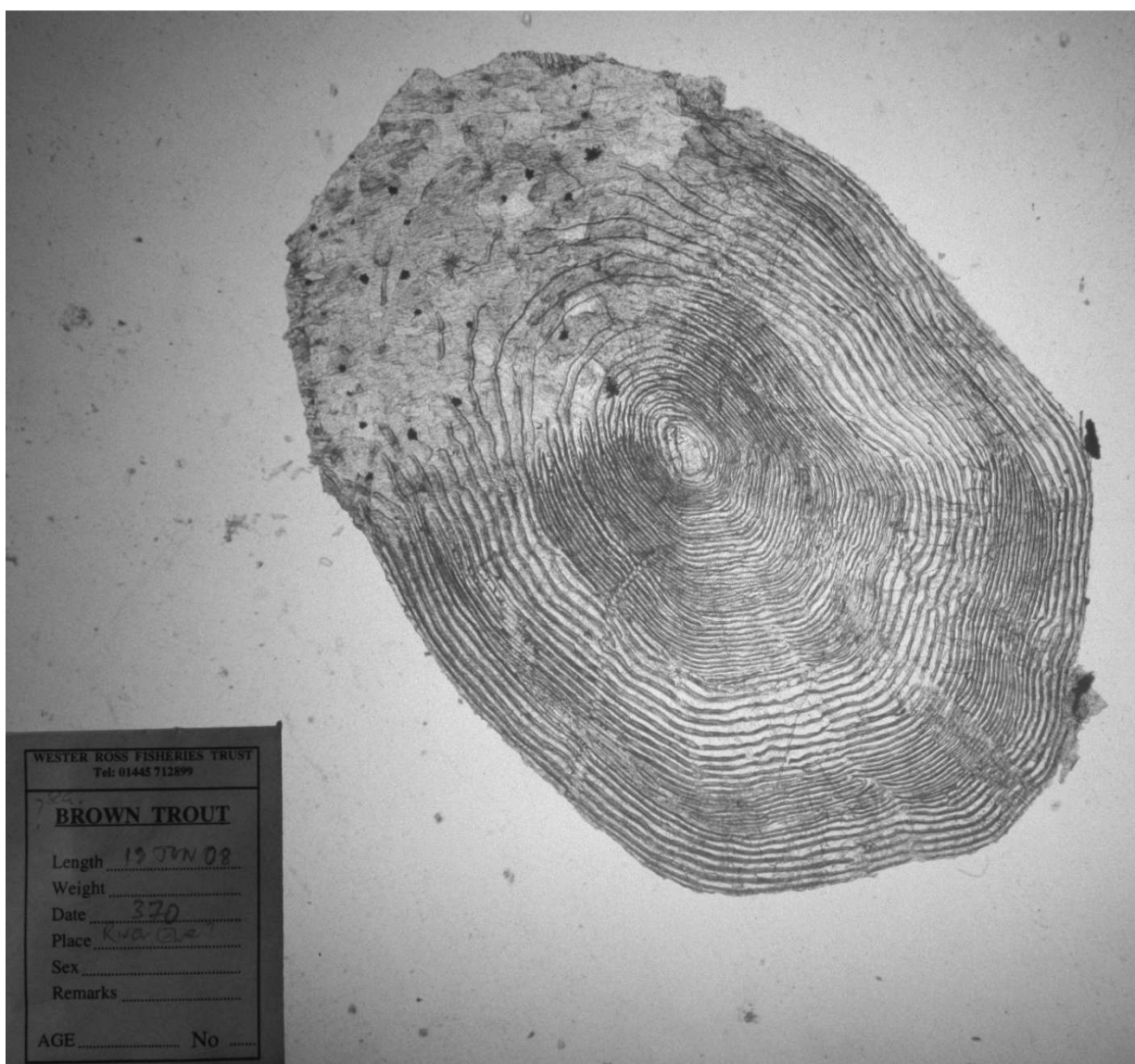
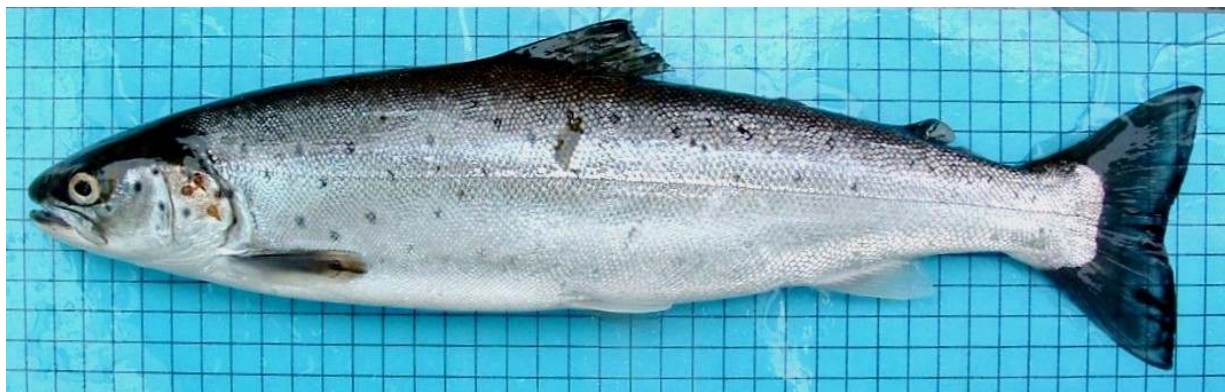


Sea trout, 370mm (575g), caught by rod and line in River Ewe on 19 June 2008.



This fish went to sea as a three year old smolt. It grew well in its first summer at sea (?2007), then there is a prolonged period of slow winter growth before current years' faster growth. Reading: 3.1+

The fish had 14 sea lice (4 chalimus, 10 preadult/adult, 0 ovigerous females)

Photos by Dr Steve Kett and Ben Rushbrooke.

Sea trout sea lice monitoring programme is funded by Scottish Government via the TWG