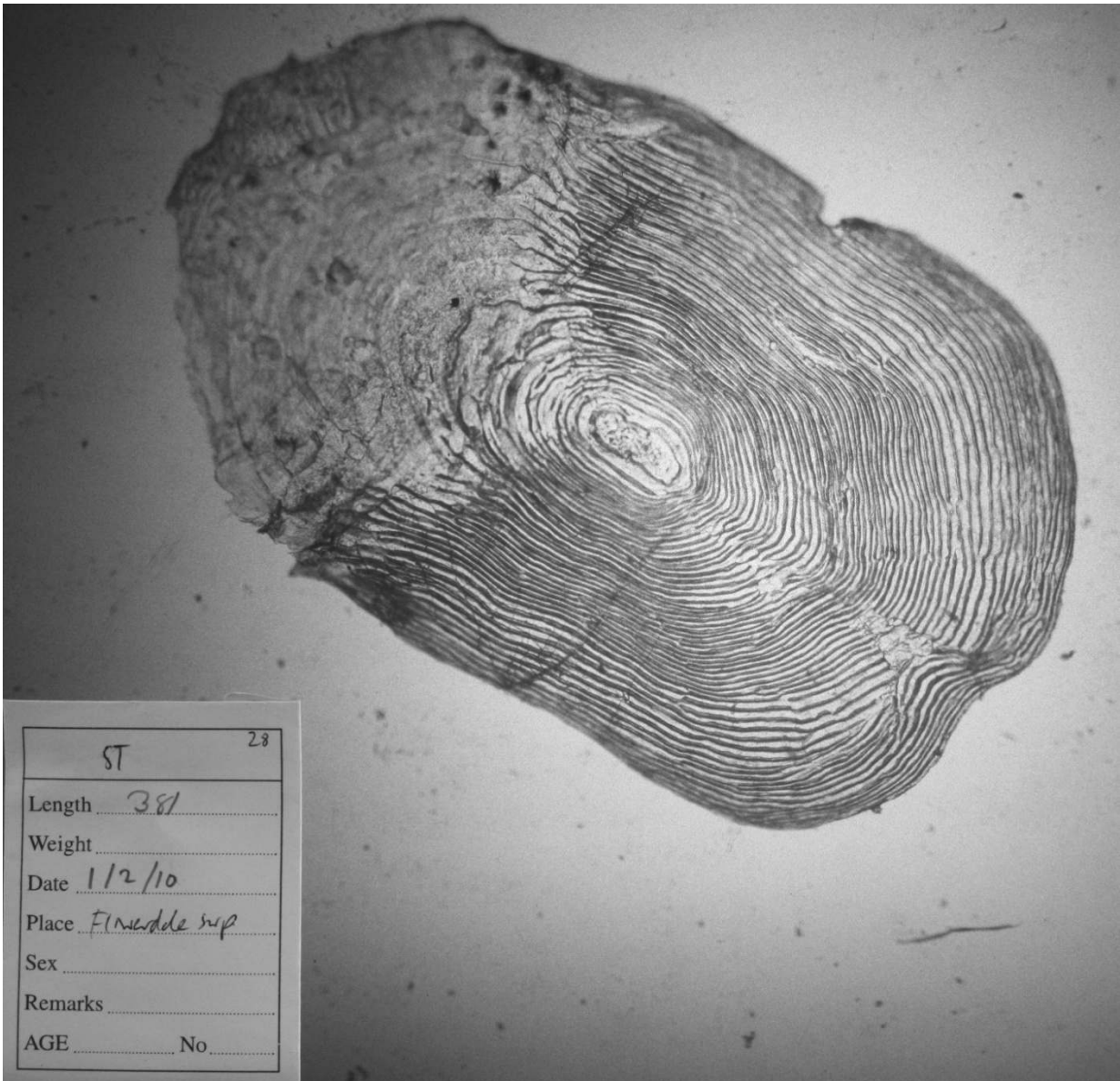


Sea trout, 381mm, taken in WRFT sweep net on 1st Feb 2010, Flowerdale Estuary, Gairloch.



Freshwater age of this fish could not be ascertained because scales had replacement centres. The fish shows two summers at sea, with spawning mark in second winter with some regrowth of scale margin since then. There is considerable growth during 1st winter after initial summer at sea. Reading: ?2.2sm+. There were 13 *L. salmonis* sea lice on this fish (4 chalimus, 8 preadults/adults, 1 ovigerous female). Photos by Peter Cunningham and Ben Rushbrooke.

Sweep netting supported by the Scottish Government via the Tripartite Working Group.