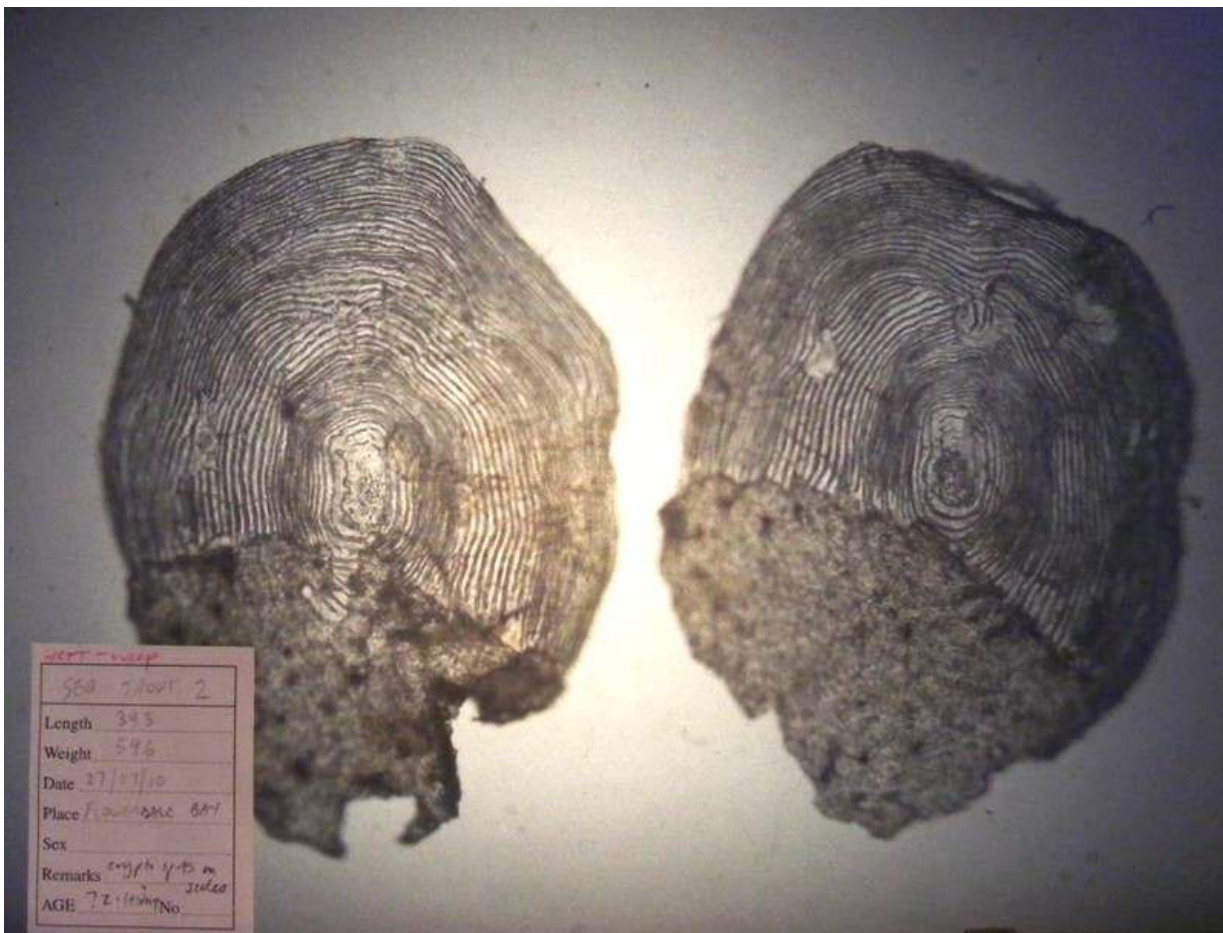


Sea trout, 393mm, taken in WRFT sweep net on 27 July 2010, Flowerdale Estuary, Gairloch.



All the scales taken from this fish had missing centres so the age at smoltification is uncertain. Thereafter the fish has had two summers at sea prior to the current one, possibly spawning after the second summer in 2009. The main reason for posting this scale is the circular *Cryptocotyle lingua* marks seen on the scale on the right.

There were 18 sea lice on this fish (7 chalimus, 8 preadults/adults, 3 ovigerous female) and the dorsal fin is slightly eroded.

Sweep netting supported by the Scottish Government via the Tripartite Working Group.