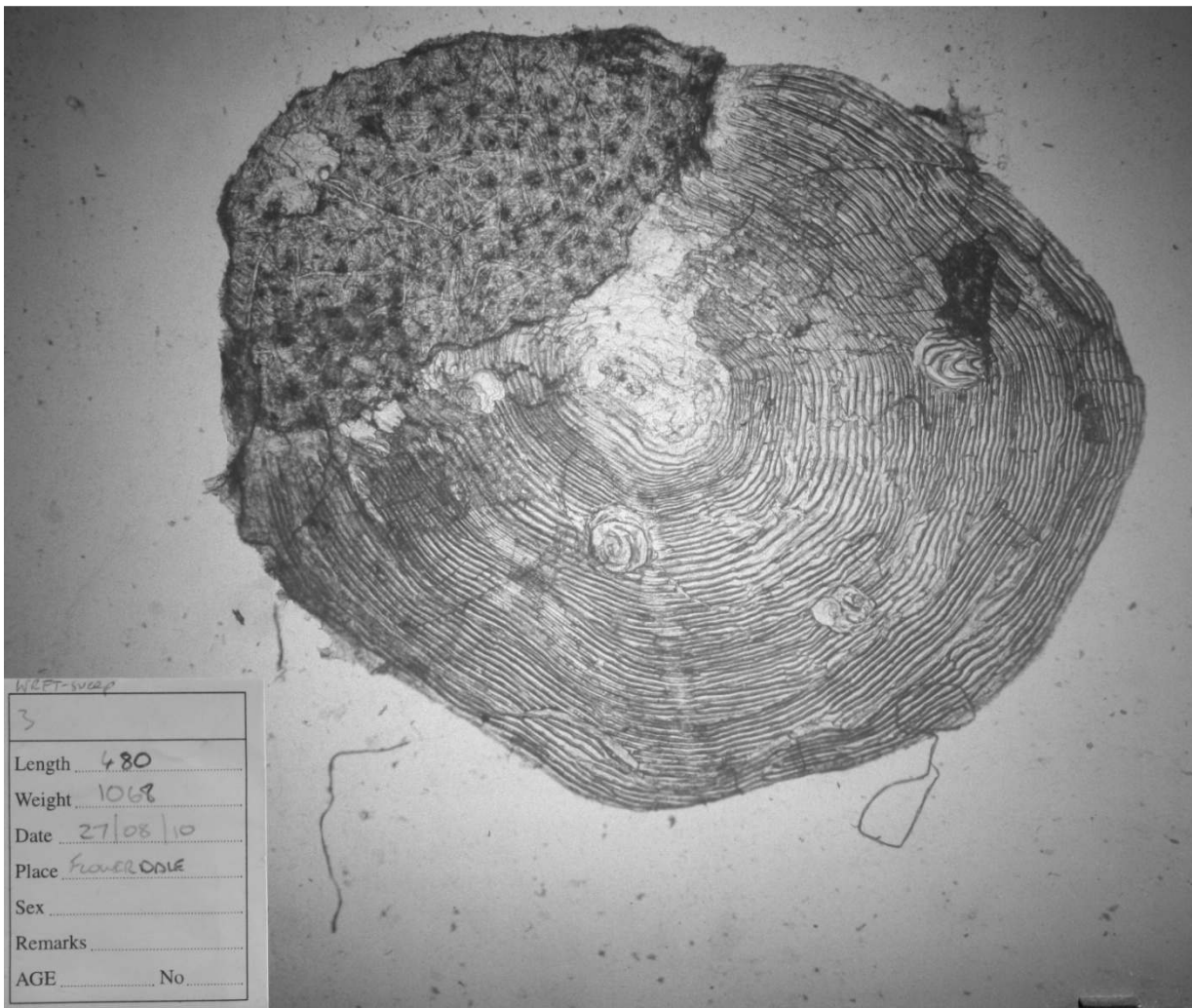


Sea trout, 480mm, taken in WRFT sweep net on 27Aug 2010, Flowerdale Estuary, Gairloch.



Freshwater age of this fish cannot be read from this scale. Thereafter there are three winter checks; with possible spawning mark in 2nd winter and clearer spawning mark in 3rd winter prior to current year's growth.

There were 11 *L. salmonis* sea lice on this fish (1 chalimus, 6 preadults/adults, 4 ovigerous female). Note the circular marks on the scale: do these relate to *Cryptocotyle ligua* infection?

Photos by Rosie Norman and Ben Rushbrooke

Sweep netting supported by the Scottish Government via the Tripartite Working Group.